

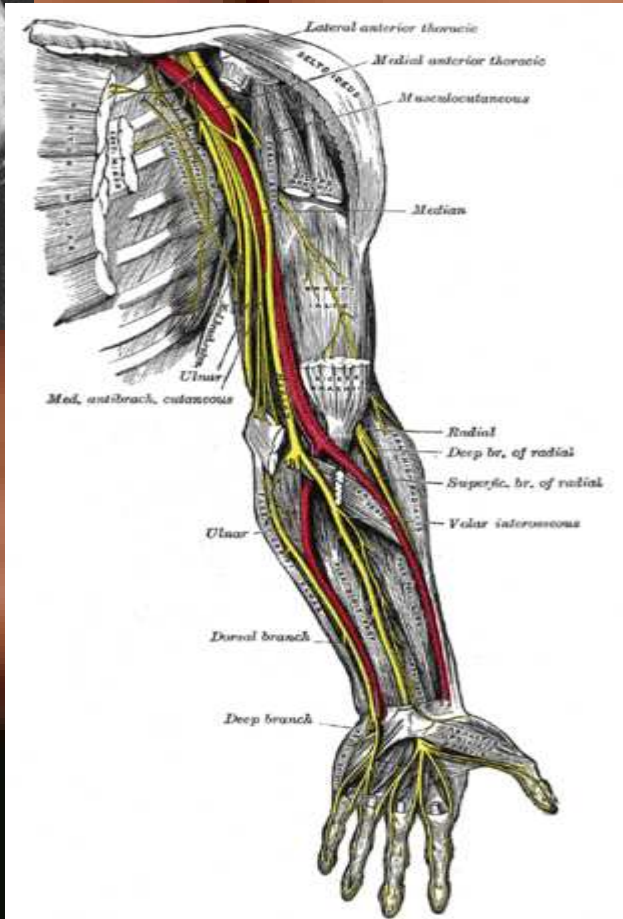
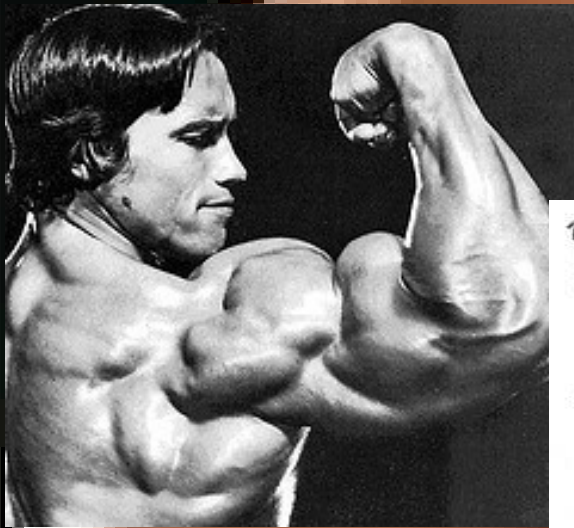
Examining the Belly of the Beast:

An Introduction to Sustainable Consumption (and Production) for Local Governments

BC Land Summit, Whistler, BC May 21, 2009



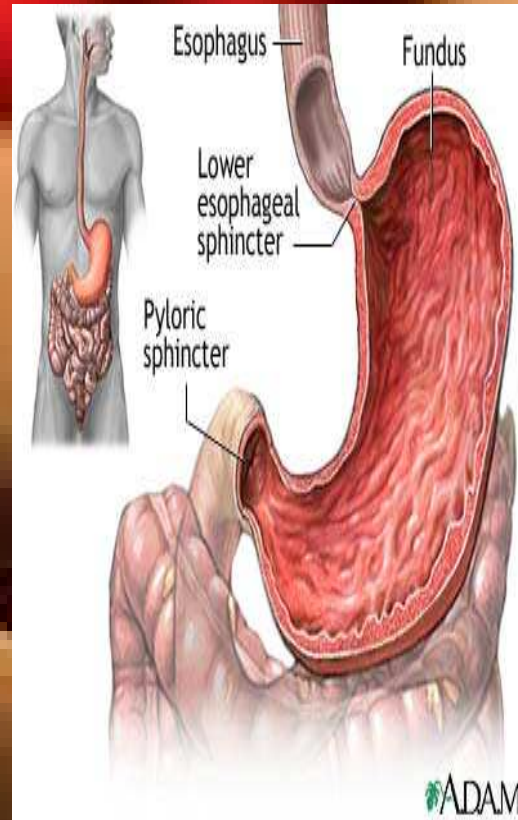
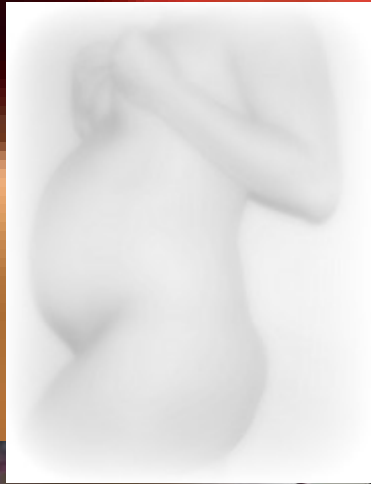
A Conceptual Framework for Unsustainable Consumption (and Production)



We Can Do It!

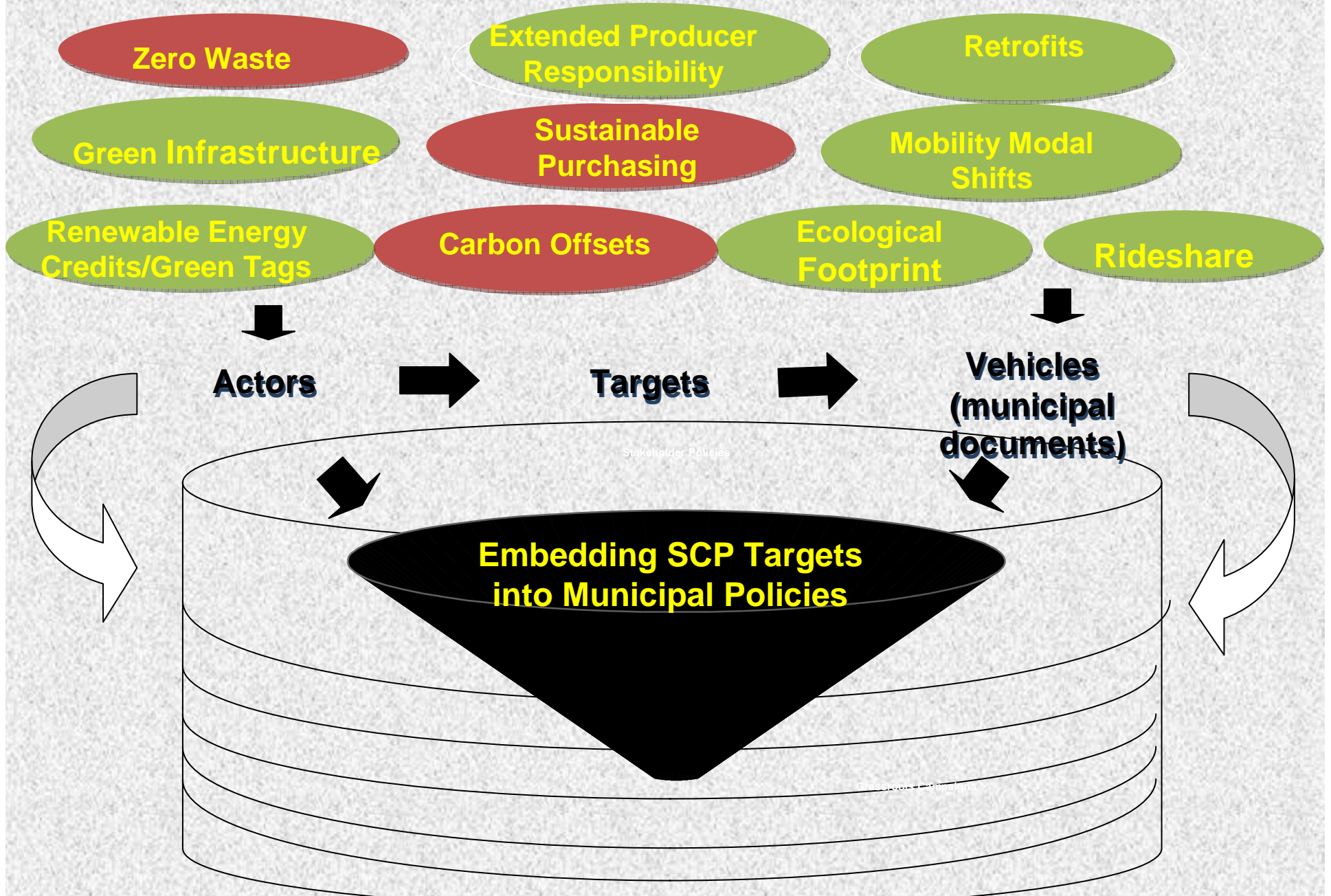


WAR PRODUCTION CO. DESIGNING COMMITTEE



A Conceptual Framework Toward SCP

Examples of Municipal SCP Programs



SCP . . .

- Up until now, sustainability has tended to focus on the supply side of the equation, such as improving environmental performance .
- Sustainable consumption (and production) addresses the demand side, looking at how goods and services are required to meet basic needs and improve quality of life in ways that reduce the burden on the Earth's carrying capacity.

Thank you

david.hendrickson@ubc.ca

Questions?

- Is SCP a useful lens to look at sustainability?
- How are you measuring consumption?
- Are SCP programs happening within your jurisdiction?
- What are the greatest challenges with implementing SCP initiatives?

SCP Emphasizes ...

- Demand-side management instead of supply-side options.
- Environmental carrying capacity and social carrying capacity (e.g. time).
- Value-added consumption instead of value-depleted consumption.
- Collective instead of individual buying.
- Intensity-based emissions instead of aggregate consumption levels.